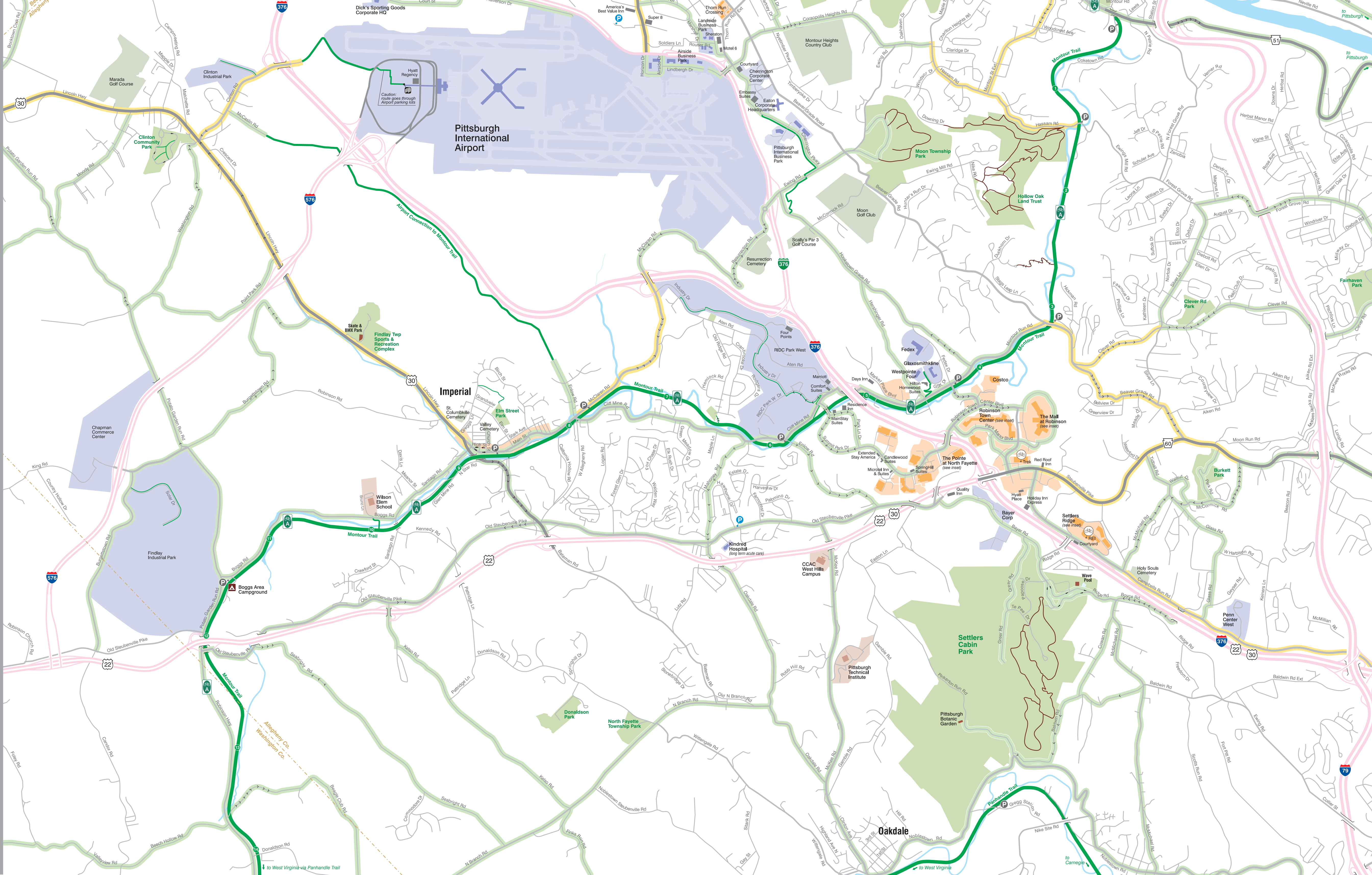


Pittsburgh Airport Area BIKE CONNECTIONS

www.actabikemap.org Summer 2014



- Expressways — no bicycling, except where indicated
- Montour Trail and Panhandle Trail
- Montour Trail Airport Connector
- Other Bike Paths
- Dirt Trails
- On-Street Connections
- On-Street Connections, with caution
- Streams
- Uphill Section
- County Boundary
- Bike Shop
- Montour Trail Mile Markers
- Airport Terminal Bike Rack
- Trail Access Parking
- Park N'Ride
- Bus Stops *
- Hotels
- Campground
- Bicycle PA Route
- Recreational / Cultural / Historic
- Shopping and Dining
- Corporate Campus
- School Campus
- Park
- Cemetery / Golf Club

Cartography by Informing Design, Inc.

* Check PAT website (www.portauthority.org) for up-to-date route and schedule information.

Disclaimer: This map is intended to aid bicyclists in choosing routes between locations. This map is not in any way a warranty or guarantee as to the stability of roadway conditions or the fitness of listed routes for bicycling. Many of the routes identified on this map cross or run along public roads which are exposed to wear and tear and degradation due to weather, traffic, and other environmental concerns. Riders should remain alert as routes may contain pavement rutting, cracks, bumps, expansion joints, natural or other debris on pavement surfaces, and vegetation which may encroach on routes or portions thereof. Riders should also remain alert for areas of visual impairment and other irregularities that may impact rider and motorist ability to see each other or potential road hazards. The chance that one may come into an area of visual impairment or a route irregularity warrants special care on the part of route users.

Accordingly, route users should maintain a vigilant lookout for these conditions and irregularities. Route users should always ride with care for their own safety and that of other users. ACTA does not assume liability for bicyclists traveling upon routes shown in this map. Safe route selection includes consideration of motor vehicle, bicycle and pedestrian traffic and roadway or route conditions.

The user of this map bears the full responsibility of his or her safety.